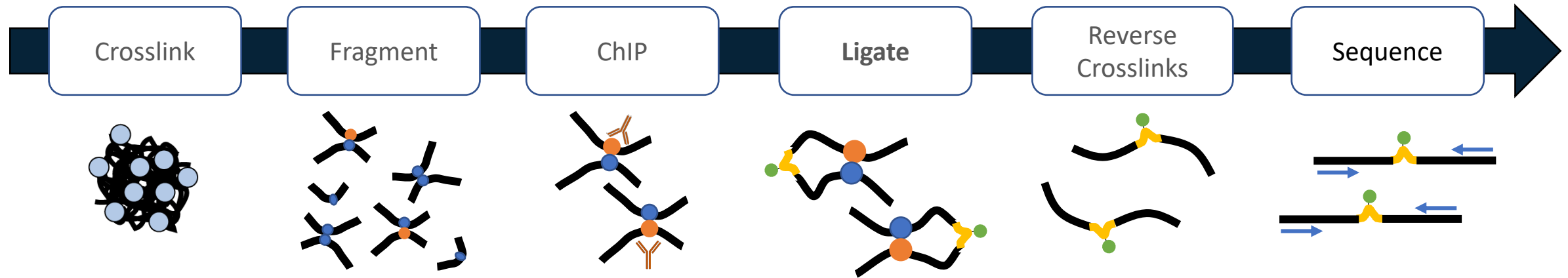




Investigate protein-directed chromatin architecture with Dovetail™ HiChIP MNase Kit

Cory Padilla, Ph.D.
Scientific Affairs, Dovetail Genomics

Dovetail™ HiChIP Workflow Combines Hi-C and ChIP-seq



Down to 1 M mammalian cell input. Dual cross-linking maximizes long-range information	Dovetail <i>MNase</i> fragmentation eliminates any sonication & enables nucleosome level resolution	8 pre-validated antibodies available with more to come. Alternatively, validate your own antibodies	Optimized proximity ligation for efficient conversion of free ends to ligation products	Efficient cross-link reversal with biotin enrichment to minimize target molecule loss	Standard paired-end sequencing using any Illumina NGS instrument
---	---	---	---	---	--

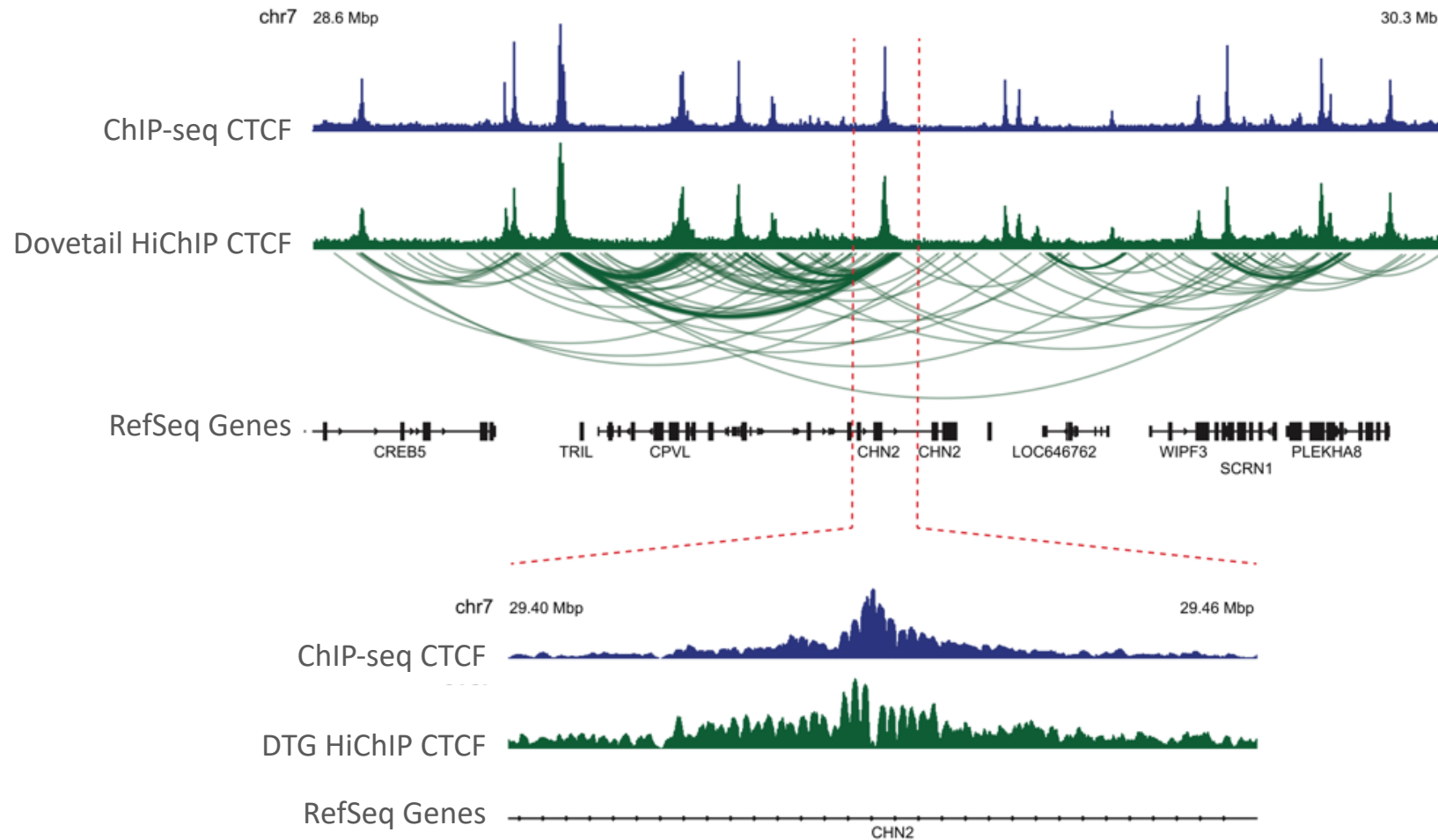
Input down to
1 M cells

No sonication
required

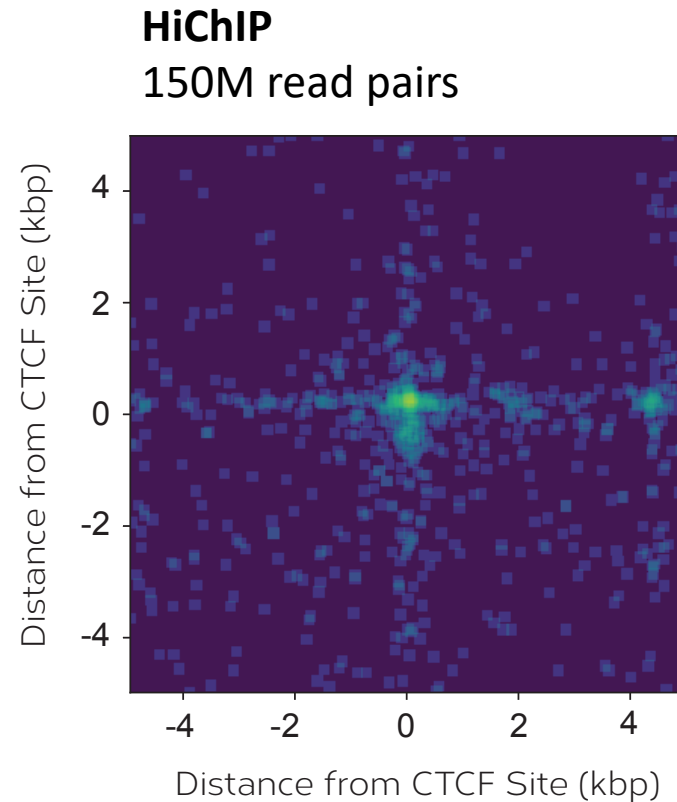
Pre-validated or
validate your own
antibodies

Standard proximity-ligation and
library preparation methods

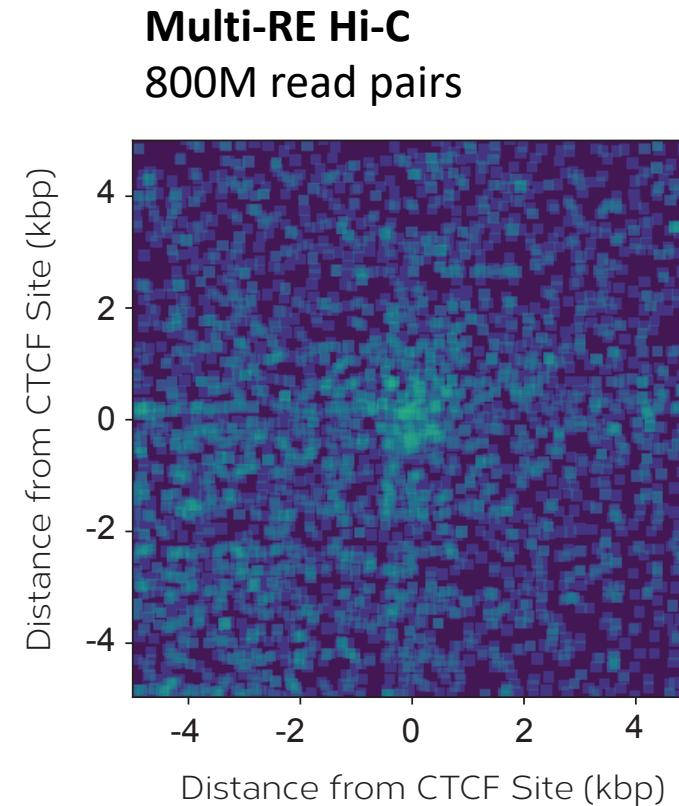
Capture ChIP-seq Data & Hi-C Long-range Information In A Single Library



Increased signal to noise ratio while decreasing sequencing cost



Signal to noise ratio = 2.5



Signal to noise ratio = 0.9

Signal to noise ratio is calculated by: the mean coverage of the top 25 percentile over target sites divided by the coverage (top 25 percentile) over non-target sites normalized to IgG

Easy Adoption With Pre-Validated Antibodies

Validated Antibodies	Future Antibodies
CTCF	Sox2
H3K27ac	Nanog
H3K4me3	Oct4
H3K27me3	KLF4
H3K36me3	PRC
H3K4ac	Suz12
PolII	Smc1
Smc3	

Or validate your own antibodies following the validation steps provided in the Dovetail™ HiChIP *MNase* Kit